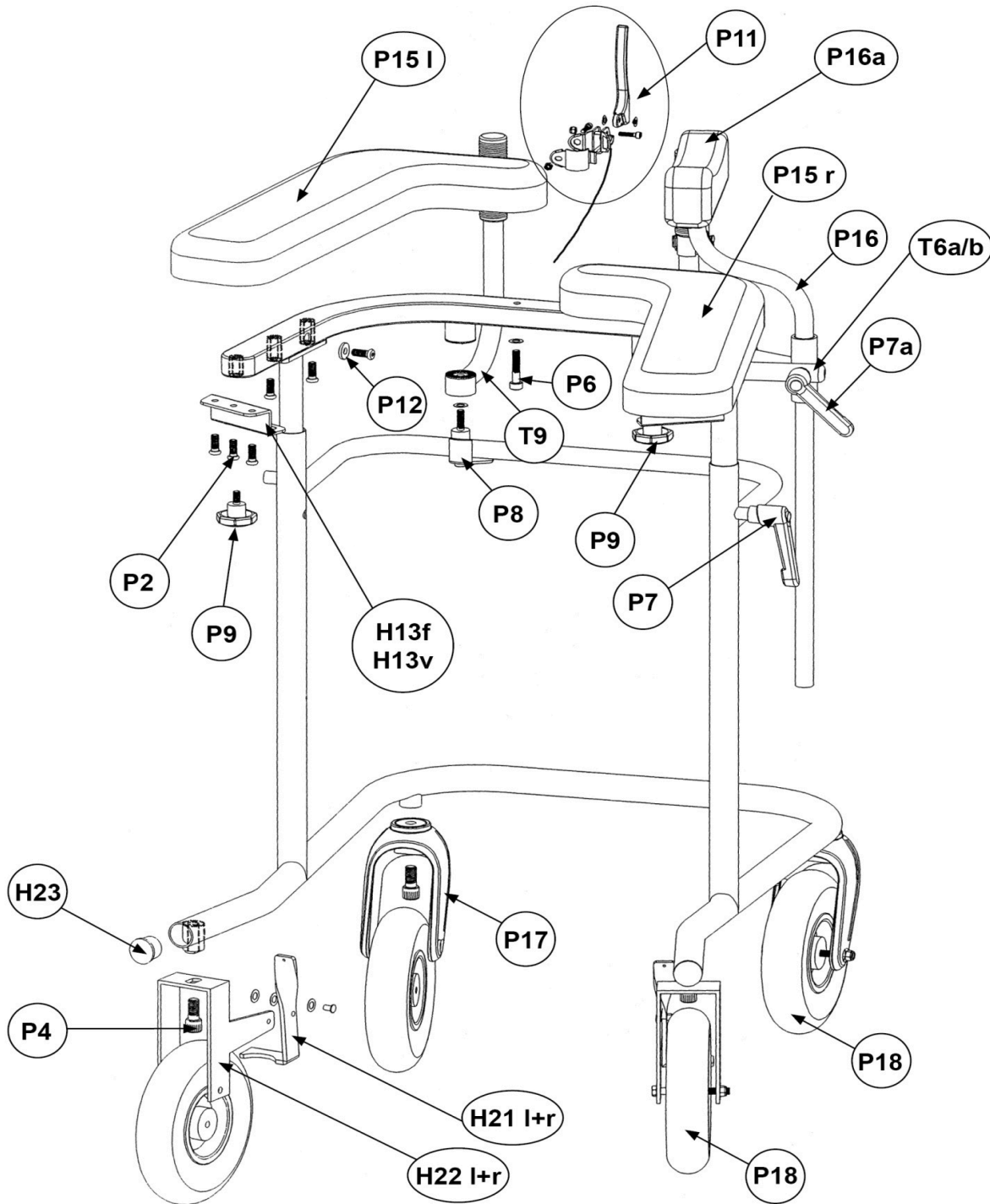


Ersatzteilliste / Spare parts list

trio Gehwagen / trio walker

Art. 9800020401100 / 9800020451100 / 9800020501100 / 9800020551100

Stand / status: 2020-01, technische Änderungen vorbehalten / subject to technical alterations



Ersatzteilliste / Spare parts list

trio Gehwagen / trio walker

Art. 9800020401100 / 9800020451100 / 9800020501100 / 9800020551100

Stand / status: 2020-01, technische Änderungen vorbehalten / subject to technical alterations

Alle Preise in € zzgl. der gesetzlichen MwSt. / All recommended prices in € plus VAT

| Pos. | Art.-Nr. / Item code | Beschreibung | Description | Menge / Quantity |
|------|----------------------|--|---|------------------|
| P15 | 9700182000000 | Armauflagen, schwarz (R+L) | arm support, black (right+left) | 1 |
| H13v | 9700182010000 | Armauflagen-Befestigung, variabel | fastening for arm support, variable | 2 |
| H13f | 9700182220000 | Armauflagen-Befestigung, fix | fastening for arm support, fix | 2 |
| P16 | 9700182201000 | Achselstützen, R/L komplett (ohne Halterungen) | arm pit, right/left, complete with polster | * |
| P16a | 9700182020000 | Achselstützen-Auflage, schwarz | arm pit support cushion, black | * |
| P11a | 9700182030000 | Handbremse li. m. Bowdenzug,kplt. | handbrake left with bowden wire,complete | 1 |
| P11b | 9700182031000 | Handbremse re. m. Bowdenzug,kplt. | handbrake right, with bowden wire, complete | 1 |
| H21r | 9700182040000 | VA-Bremsbügel,rechts | VA brake arm, right | 1 |
| H21l | 9700182050000 | VA-Bremsbügel,links | VA brake arm, left | 1 |
| H22r | 9700182060000 | Hinterrad-Adapter,rechts | back wheel adapter,right | 1 |
| H22l | 9700182070000 | Hinterrad-Adapter, links | back wheel adapter,left | 1 |
| H23 | 7502018039905 | Lamellenstopfen 32 x 5 (Trio) | blade plug 32 x 5 (Trio) | 1 |
| T9 | 9700182080000 | Haltebügel mit Griff | holder with grip | 2 |
| T6a | 9700182090000 | Achselstützen-Adapter, rechts | arm pit adapter, right | * |
| T6b | 9700182100000 | Achselstützen-Adapter, links | arm pit adapter, left | * |
| P2 | 9700182110000 | Schraube M8x20 (P2) | screw M8x20 (P2) | * |
| P4 | 9700182120000 | Schraube M12x25 (P4) | screw M12x25 (P4) | 4 |
| P6 | 9700182130000 | Schraube M8x40 (P6) | screw M8x40 (P6) | 2 |
| P7 | 9700180050000 | Knebelschraube M10x20-SW | toggle screw M10x20 | 2 |
| P7a | 9700182230000 | Knebelschraube M10x25 (P7a) | toggle screw M10x25 (P7a) | * |
| P8 | 9700182150000 | Handbügel-Knebelschraube (P8) | toggle screw for hand bow (P8) | 2 |
| P9 | 9700182160000 | Sterngriffschraube (P9) | star nut group (P9) | 2 |
| P12 | 9700182170000 | U-Scheibe 20x8,2x3,0 (P12) | washer 20x8,2x3,0 (P12) | * |
| P18 | 9700182180000 | Flexel-Rad 200x50, grau | flexibel wheel 200x50, grey | 4 |
| P17 | 9700182190000 | Kunststoffgabel,schwarz | wheel fork (plastic), black | 2 |
| | 9700182210000 | Endhülse für Bowdenzug (Trio) | end sleeve für bowden wire (Trio) | 1 |